

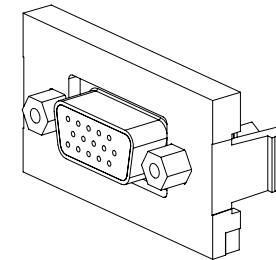
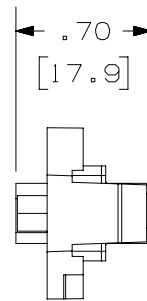
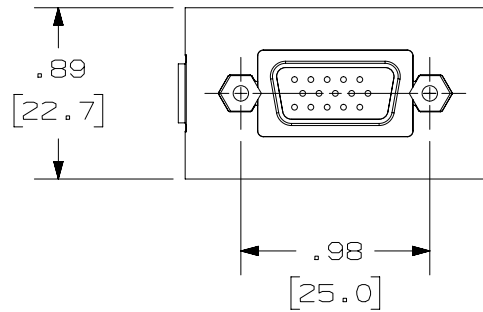
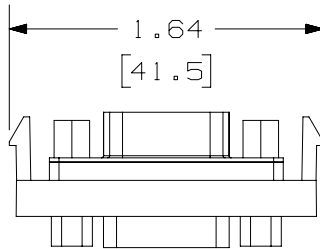
THIS COPY IS PROVIDED ON A RESTRICTED BASIS AND IS NOT TO BE USED IN ANY WAY DETRIMENTAL TO THE INTERESTS OF PANDUIT CORP.

PANDUIT P/N	WEIGHT
CHD15HDC**	.28 LB/10 PCS (125.9 g/10 PCS)



NOTES:

1. SEE WWW.PANDUIT.COM FOR ADDITIONAL PART NUMBER SUFFIXES TO INDICATE COLOR AND OR PACKAGE QUANTITY.
2. SEE WWW.PANDUIT.COM FOR COMPLETE LIST OF PARTS APPLICABLE FOR USE WITH THIS PART.
3. DIMENSIONS IN PARENTHESES ARE IN METRIC.
4. PART TO WORK WITH ALL PANDUIT FACEPLATE FRAMES.



PART NUMBER		SEE TABLE	
TITLE			
15 PIN HIGH DENSITY SVGA 1/3 INSERT COUPLER			
CUSTOMER DRAWING			
ITEM REVISION NAME		M01095AB/04	
DATASET FILE NAME		M01095AB_DC/04A	
UNLESS OTHERWISE SPECIFIED, DIMENSIONAL TOLERANCES ARE: IN (mm)		MATERIAL:	
.x ± .xxx ± .010 (.3)		DRAWING NUMBER:	
.xx ± .03 (.8) ANGLES ±		01095-07	
		THIRD ANGLE PROJECTION	
DRAWN BY	DATE	CHK	SCALE
JSP	1-26-01	PBD	NONE
SHT 1 OF 1			SIZE
			A

REV	DATE	BY	CHK	APR	DESCRIPTION	ECN
04A	6-28-22	BJN	ROJC	MMR	E. REMVD IAPHD15HDCWH D. UPDATED CAD MODEL TO REV 04 REVISED & REDRAWN PREVIOUS REVISIONS REMVD FOR CLARITY	01095-07

D10100DA/14

2

1

2

1